

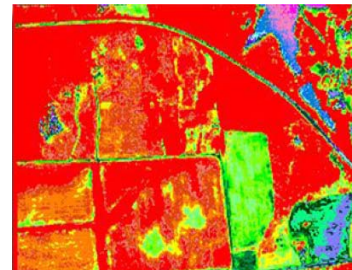
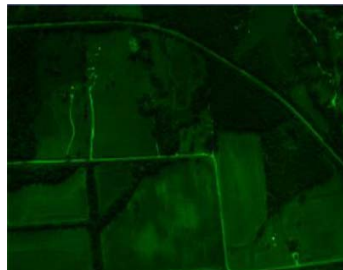
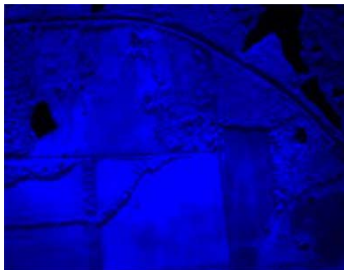


Micro-MCA MULTISPECTRAL (NIR) CAMERA

The Micro-MCA is the latest incarnation of Tetracam's two decade old line of MCA (Multiple Camera Array) multi-spectral imaging systems. Micro-MCA is lighter, more compact and faster than the market-leading Mini-MCA that immediately preceded the current system.



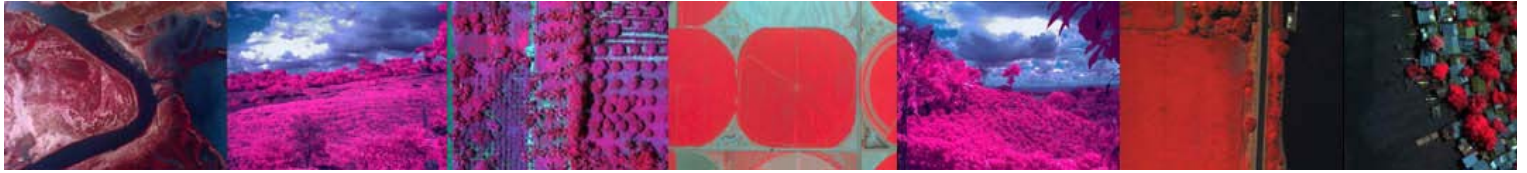
Like the Mini-MCA, the Micro-MCA and Micro-MCA Snap systems are available in three models, one with an array of four cameras, one with six and one with twelve separate cameras.



The Micro-MCA is available in two versions, an economically-priced standard Micro-MCA system and a Micro-MCA Snap system. The latter comes with cameras equipped with lightning-quick global snap sensors, specifically designed for gathering distinct, distortion-free, stop-action imagery from unmanned aerial vehicles flying low and fast over forests or farmland.

Both the standard Micro-MCA and Micro-MCA Snap systems are provided with 16 GB micro SD memories rather than the 2GB compact flash memories supplied with Mini-MCAs. The larger memories enable users to collect up to 12,000 images from each camera in the array during any single remote sensing mission. Both systems are also delivered with an enhanced USB 2.0 interface. This provides the principal conduit for moving images out of the system's cameras for processing. The USB 2.0 interface supplied with the Micro-MCA and Micro-MCA Snap provides data transfer rates that are ten times faster than the USB interface supplied with the Mini-MCA.





System Overview

5.2 to 15.6 MPeI Configurable Camera Array of 4, 6 or 12 Multi-spectral channels (~450 to ~ 1000 nm) for Manned and Unmanned Aircraft

Image Triggering

On-Camera Control Button, Auto-Timer, Remote Shutter (External Trigger), RS232 Serial Trigger.

Default Ports

USB 2.0 data connection, RS232 Serial, Video (NTSC or PAL), Remote Shutter (External Trigger)

Sensor

1.3 mega-pixel CMOS sensor (1280 X 1024 pixels)
 Micro-MCA - Rolling shutter sensor
 Micro-MCA Snap - Global shutter sensor

Power

+ 9 VDC to + 16.5 VDC Center Positive

Weight

Micro-MCA4: 497 g
 Micro-MCA6: 530 g
 Micro-MCA12: 1160 g

Dimensions

Micro-MCA4: 115.6 x 80.3 x 68.1
 Micro-MCA6: 115.6 x 80.3 x 68.1
 Micro-MCA12: 115.6 x 155 x 68.1

Micro-MCA 6 System Includes:

6 channel Mini MCA camera

- 6 ea. 16 GB Micro SD Cards
- 6 ea. 9.6 mm lenses
- 6 ea. 1.3 MB image sensors (7.8 MB total)
- 6 ea. Standard Bandpass Filter Set *
 - 490FS10-25
 - 550FS10-25
 - 680FS10-25
 - 720FS10-25
 - 800FS10-25
 - 900FS20-25

12 VDC external power supply

System CD with PixelWrench2 software (PW2)

(See additional System CD contents under Features below)

Rugged Pelican Carrying Case

USB Cable

Power Cord (un-terminated on one end)

White Teflon Calibration Plate (AKA Calibration tag or Software Calibration Tile).



VISION ASIA TECHNOLOGY PTE LTD
 14 ROBINSON ROAD #13-00
 FAR EAST FINANCE BUILDING
 SINGAPORE 048545
 PHONE: +65-6451-1857
WWW.VISIONASIA.COM.SG